

Modular



INDOOR DISPLAYS

Optec's indoor product range features ultra-high pixel density LED tiles, designed for close proximity viewing and high resolution visuals.



OPT-PANEL
0.9-2.5mm

Opt-Panel is an ultra-high pixel density module, supporting 1080p, 4K, 8K and greater resolutions.



OPT-SLIM SERIES
2.6-4.8mm

The Opt-Slim Series feature bright, high pixel density tiles, and lightweight, low-profile module designs.

Packaged



OPT-TV
up to 165" Diagonal

Opt-TV is an ultra-high pixel density, 1080p or 4K resolution TV style display.



OPT-WIN
2.5-4.8mm

Opt-Win is a uniquely bright display designed for in-window or bright indoor environments.



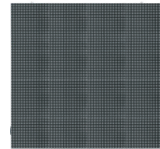
OPT-POSTER
1.9-2.5mm

Opt-Poster is an ultra-thin, portable, all-in-one display designed to place, plug, and play.



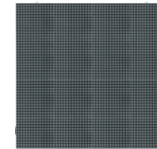
OUTDOOR DISPLAYS

Optec's outdoor product range features ultra-bright LED tiles and durable all-weather cabinets, designed for a variety of viewing distances and environments



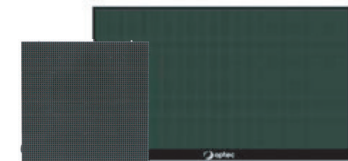
INFINITY-HB2-SMD
6.67-13mm

The Infinity HB2-SMD display features better contrast delivering sharper, brighter images with all-weather performance. Leveraging the newest proven technology high brightness LEDs and the new high contrast developments in the market. This product creates unforgettable visual experiences.



INFINITY-HC-SMD
2.6-4.8mm

The Infinity HC-SMD delivers vivid colors and vibrant visuals. Its optimized playback and higher resolution options ensure an unforgettable visual experience that will leave a lasting impression.



INFINITY SERIES-2-DIP
10-20mm

The Infinity Series features a range of LED DIP tile options including, discrete RGB and monochrome. Infinity is available in three all-weather cabinet designs - modular, traditional, and front vent.

Economy models available



DIGIT SERIES
8-36+ Inch

The Digit Series feature bright, clear character displays with remote control, and all-weather performance displays with remote control, and all-weather performance.

Cloud-Based Software



SOFTWARE

Optec engineers software applications that feature innovative tools for creating, editing, and scheduling dynamic visual content. We develop intuitive programs designed to enable users to deliver engaging content experiences through their LED display.

M.E. CLOUD
CLOUD-BASED SOFTWARE

M.E. Cloud combines the best of our PC-based M.E. Pro+ with the freedom and simplicity of our DNET cloud-based software. M.E. Cloud is the perfect tool for organizations of all skill levels to effortlessly manage their Optec LED displays from anywhere*.



DNET 3.0
CLOUD-BASED SOFTWARE

DNET 3.0 is an enterprise cloud-based software allowing access to users on-demand, via Internet access, to manage a network of displays. Use a web browser on a computer, mobile phone, or tablet to network, schedule, and manage content quickly and effectively from anywhere*.

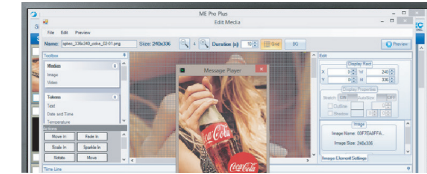


*Internet access required. Apple, iPad, iPhone, the Apple logo, and all other Apple marks contained herein are trademarks of Apple and/or Apple affiliated companies.

PC-Based Software

M.E. PRO+
MEDIA EDITOR PRO PLUS SOFTWARE SUITE

M.E. Pro+ is the most dynamic version of Media Editor ever. Innovative tools for creating, editing, and scheduling are built around an interface that is designed to deliver content quickly and effectively via desktop or cloud.



Additional PC-Based Software Options

M.E. Pro+ - VPC
Supreme. Transform zoned displays into virtual price changers. Include dynamic advertising zones to increase revenue.

M.E. Pro* - VS
Game on. Easily turn zoned displays into virtual scoreboards. Insert advertising zones, live video, and more.

Diagnostic Utility



DIAGNOSTIC UTILITY

AUTOMATED DISPLAY DIAGNOSTICS & ALERTS

Diagnostics* are performed automatically by and within the LED display. When the system is first powered up, the entire display is scanned for events. The system will continue to monitor the display and its health in the background without disrupting performance. If an event occurs, the system can send an alert.

Diagnostics Yield Improved Service Results



* Internet connection required. Auto Diagnostics available on demand.

Connectivity



CELLULAR SERVICE

CELLULAR SERVICE & NETWORK CONNECTIVITY

Optec's turnkey cellular solution* enables a dedicated secure connection with remote/cloud access to your LED display. Eliminate complicated network setup and wireless interference, and gain greater display installation flexibility.

Our displays can really hear you now.



*Verizon Wireless coverage and services not available everywhere. See Verizon Wireless coverage map for more information. Terms subject to change. Verizon, Verizon Wireless, the Verizon logo, and all other Verizon marks contained herein are trademarks of Verizon Wireless and/or Verizon affiliated companies.

Warranty



WARRANTY

WARRANTY AND PARTY COMMITMENT

Every Optec LED product carries a multi-year part and in-factory labor warranty¹. Each display delivered carries a ten-year part availability commitment. For over 35 years, Optec has stood behind its innovative products with industry-leading quality commitments to our clients.

Our warranty is our commitment to quality, reliability, and excellence.

Certifications¹



¹For warranty and certification details, contact your Optec dealer or sales consultant. ²FCC Part 15 - Class A compliant. All marks contained herein are trademarks of each company and/or their affiliates



Worldwide Headquarters
1700 S. De Soto Place, Ontario, CA 91761 USA
Phone: +1.800.876.1668 Fax: +1.626.369.7858
www.optec.com

